

## TABLE OF CONTENTS

<b>Conference Sponsors .....</b>	<b>Inside Cover</b>
<b>Welcome .....</b>	<b>2</b>
<b>ADIPS &amp; SOMANZ Secretariat .....</b>	<b>3</b>
<b>Conference Secretariat .....</b>	<b>3</b>
<b>Information for Delegates and Presenters .....</b>	<b>5 – 7</b>
Venue Directory.....	5
Registration Desk.....	5
Onsite Conference Manager .....	5
Registration Inclusion .....	5
RANZCOG Maternal Fetal Medicine Colloquium.....	6
Welcome Reception .....	6
Conference Dinner.....	6
Speaker Preparation .....	6
Poster Presentations .....	6
Name Tags.....	6
iPhone/Android Conference Web-App .....	6
Wi-Fi.....	7
Special meal requests.....	7
Smoking.....	7
Mobile Phones.....	7
Insurance.....	7
Disclaimer.....	7
<b>Invited Speakers.....</b>	<b>10 – 14</b>
<b>Program.....</b>	<b>15 – 25</b>
Thursday 19 <sup>th</sup> Oct.....	15 – 16
Friday 20 <sup>th</sup> Oct.....	17 – 19
Saturday 21 <sup>st</sup> Oct.....	20 – 23
Sunday 22 <sup>nd</sup> Oct .....	24 – 25
<b>Poster Listing.....</b>	<b>27 – 31</b>
<b>Exhibition &amp; Floor Plan .....</b>	<b>32</b>
<b>Sponsor &amp; Exhibitor Listing .....</b>	<b>32 – 33</b>
<b>Notes .....</b>	<b>34 – 36</b>

---

## WELCOME

---

Welcome to Canberra, Australia's capital, and to the Joint Annual Scientific Meetings of ADIPS and SOMANZ. The two societies meet jointly every 3 years so we hope you will enjoy the program format and content this year. We have tried where possible to not have concurrent sessions so you can attend the majority of the sessions.

We welcome two outstanding keynote speakers to our joint conference this year - Robert Lindsay and Andrew Shennan who bring with them a wealth of knowledge to share with you. We thank them for travelling to our meeting all the way from the UK and look forward to their presentations.

Our thanks to all our invited speakers for sharing their valuable time and contributing to a very diverse program. We received over 120 abstracts to this meeting and not all could present as orals so please ensure you visit the posters too as there are many interesting research activities to immerse yourself in.

Our thanks to everyone who assisted with the organisation of this joint meeting including the team at ASN Events and our Executive Officer Suzie Neylon who have kept us all on track. We extend our gratitude to everyone who assisted with reviewing abstracts, the judges of the oral and poster presentations, the chairs and to all our loyal followers who have attended this meeting. We also extend our thanks to our sponsors and exhibitors for supporting this meeting.

We trust you will enjoy your time at this meeting and the valuable time spent with colleagues.

**Michael Peek**  
**SOMANZ Program Chair**

**Christopher Nolan**  
**ADIPS Program Chair**

---

## ADIPS AND SOMANZ SECRETARIAT

---

### **Ms Suzie Neylon**

Executive Officer | SOMANZ

Level 1, 149 Macquarie Street, Sydney NSW 2000

Postal: 145 Macquarie Street, Sydney NSW 2000

T 02 8247 6298 | F 02 9251 8174 | M 0433 458 405

E [sneylon@somanz.org](mailto:sneylon@somanz.org) | W [www.somanz.org](http://www.somanz.org)

### **Ms Suzie Neylon**

Executive Officer | ADIPS Limited

Level 1, 149 Macquarie Street, Sydney NSW 2000

Postal: 145 Macquarie Street, Sydney NSW 2000

T 02 8247 6298 | F 02 9251 8174 | M 0433 458 405

E [sneylon@adips.org](mailto:sneylon@adips.org) | W [www.adips.org](http://www.adips.org)

---

## CONFERENCE SECRETARIAT

---

### **ASN Events Pty Ltd**

9/397 Smith St, Fitzroy 3065

P: +61 3 8658 9530

F: +61 3 8658 9531

Email: [kb@asnevents.net.au](mailto:kb@asnevents.net.au)

Web: [www.asnevents.com.au](http://www.asnevents.com.au)

# Alere Actim® PROM and Partus

Early and reliable detection of pregnancy complications enables medical attention and valuable resources to be directed to patients who need them.

The Alere Actim® PROM test provides highly sensitive detection of premature rupture of membranes (PROM) and can be used even in the presence of contaminating substances.

The Alere Actim® Partus test reliably rules out the risk of imminent preterm delivery when foetal membranes are unbroken.

Both tests are ideal for use at the bedside as they take only 5 minutes and no laboratory equipment is required.

The Alere Actim® PROM and Partus tests provide timely and accurate answers for better clinical decision-making.

Contact Alere or visit [alere.com.au](http://alere.com.au) for further information.

[au.enquiries@alere.com](mailto:au.enquiries@alere.com) | 1800 622 642



## Alere Actim® PROM

Highly sensitive detection of PROM.

Detects microruptures that are clinically invisible.

Test results are not affected by blood, semen, urine, lubricants, bathing products or infections.

May be used at any gestational age.



## Alere Actim® Partus

Reliably rules out risk of imminent or preterm delivery when foetal membranes are unbroken.

Test results are not affected by semen, urine, lubricants, bathing products or infections.

May be used from week 22 onwards.

### Ordering information

Alere Actim® PROM 10 test kit	30831ETAL
Alere Actim® Partus 10 test kit	31931ETAL

**Alere**™ Knowing now matters.®

© 2017 Alere. All rights reserved. The Alere Logo, Alere and Knowing now matters and are trademarks of the Alere group of companies. Actim is a registered trademark of Medix Biochemica. A2829.2

## INFORMATION FOR DELEGATES AND PRESENTERS

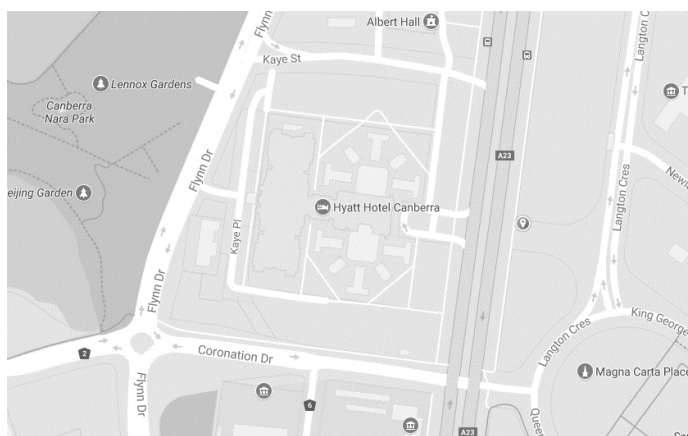
### Venue Directory

#### Hyatt Hotel Canberra

120 Commonwealth Ave,  
Yarralumla ACT 2600  
Ph: +61 2 6270 1234

Web address: [www.adips-somanz.org](http://www.adips-somanz.org)

Location	Item
<b>Federation Ballroom</b>	Plenary Sessions
<b>Canberra Room</b>	Breakout Sessions



### Registration Desk

The registration desk is located just outside of the Exhibition area in the Hyatt Hotel Canberra.

Operation Times:

- Thursday 19<sup>th</sup> Oct 2017 9:00am – 4:00pm
- Friday 20<sup>th</sup> Oct 2017 9:00am – 5:30pm
- Saturday 22<sup>nd</sup> Oct 2017 7:00am – 5:30pm
- Sunday 23<sup>rd</sup> Oct 2017 7:00am – 1:30pm

All conference related enquires should be directed to ASN Events staff at this desk.

#### Onsite Conference Managers:

Katharina Bekemeier  
ASN Events  
Email: [kb@asnevents.net.au](mailto:kb@asnevents.net.au)  
Mobile: +61 487 632 333

Jordyn Trolove  
ASN Events  
Email: [jt@asnevents.net.au](mailto:jt@asnevents.net.au)  
Mobile: +61 488 121 355

### Registration Inclusions

Delegates will receive the following goods and services as part of their registration:

- Access to the sessions of your choice
- Conference satchel complete with conference program booklet
- Morning and/or afternoon tea for the days of nominated attendance
- Lunches on the days of nominated attendance
- Ticket to the Welcome Function (booking required)
- Use of the conference app
- Complimentary Wi-Fi

## **RANZCOG Maternal Fetal Medicine Colloquium**

The RANZCOG Maternal Fetal Medicine Colloquium will be held on Thursday the 19<sup>th</sup> October from 10am at the Hyatt Hotel Canberra. Please see the registration desk to see if there are still places available.

## **Welcome Reception**

The Welcome Reception will be held on Friday the 20<sup>th</sup> October from 5:45pm to 7:30pm at the Hyatt Hotel Canberra. Please see the registration desk to see if there are still places available.

## **Conference Dinner- GREAT GATSBY THEME**

The conference dinner is without a doubt one of the highlights of the meeting. Come and celebrate at the old Parliament House on Saturday, the 21<sup>st</sup> October from 7:00pm until late. Please see the registration desk to see if there are still places available.

## **Speaker Preparation**

Presentations are to be loaded directly onto the PC within the room in which they are speaking at break prior to their session. You should bring your talk on a USB, saved in a format for display on a PC within the room. An ASN representative or AV technician will be on hand to assist with transfer / loading issues and to help you check your presentation. There are no Macintosh computers in the presentation rooms; however, you can bring your own and present from it provided you bring the appropriate conversion cables.

## **Poster Presentations**

Poster viewing will be during lunch on Friday and Saturday. Posters can be displayed from Morning Tea Friday and must be taken down after the morning tea on Sunday. The approved way of attaching your poster is with Velcro, which will be provided on your poster board.

## **Nametags**

Delegates and registered partners are required to wear their nametags to all scientific and catered sessions.

## **iPhone/Android Conference Web-App**

The App is displayed in a simple and easy to read format on your phone, iPad, or even your computer. To get the 'App', please open the below link in your internet browser on your smart phone, iPad or laptop.

**<http://adips-somanz-2017.m.asnevents.com.au/>**

You will be prompted to add an icon onto your device home screen. The 'App' will allow you to:

- View the full conference program
- View all abstracts for the conference
- Save your favorite sessions and plan your day
- Take notes which will then be saved and downloaded from your registration profile

To use most of these functions, you will be prompted to 'log in' each day. Simply enter the same email & password which you used to register.

## **Wi-Fi**

Complimentary Wi-Fi is available for delegates within the conference areas for the duration of the conference. The Wi-Fi connection is suitable for the viewing of emails and browsing. Downloading images and movies is not recommended.

How to connect:

1. Please connect to the following Network: **@Hyatt\_Wifi**
2. Select: Conference code
3. Type in Code: ADIPS2017
4. Start internet

## **Special Meal Requests**

If you have nominated for a special meal (dietary requirements, vegetarian, etc.) please identify yourself to the hotel staff. All requests have been passed onto the hotel and will be catered for accordingly.

## **Smoking**

Smoking is not permitted in the venue.

## **Mobile Phones**

Please ensure your mobile phone is turned to silent during any session you attend.

## **Insurance**

The hosts and organizers are not responsible for personal accidents, any travel costs, or the loss of private property, and will not be liable for any claims. Delegates requiring insurance should make their own arrangements.

## **Disclaimer**

The hosts, organizers and participating societies are not responsible for, or represented by, the opinions expressed by participants in either the sessions or their written abstracts.



**Join with us and congratulate  
ADIPS  
as the Society celebrates its  
30<sup>th</sup> Anniversary in 2017**







**Accuracy matters.**  
**Come and see the**  
**Accu-Chek team**  
**to learn more.**



[po.st/startguide](http://po.st/startguide)

[po.st/startfastclix](http://po.st/startfastclix)

[www.accu-chek.com.au](http://www.accu-chek.com.au) • Accu-Chek Enquiry Line: 1800 251 816

For people with diabetes. Use only as directed. Consult your healthcare professional for advice.

Accu-Chek lancing devices are for single patient use only. The same device must not be used for multiple patients.

ACCU-CHEK, ACCU-CHEK GUIDE and FASTCLIX are trademarks of Roche. © 2017 Roche Diabetes Care.

All other trademarks are the property of their respective owners.

Roche Diabetes Care Australia Pty Ltd. 24-32 Lexington Drive

Bella Vista NSW 2153 Australia. ABN 69 602 140 278

RDC6333 09/2017

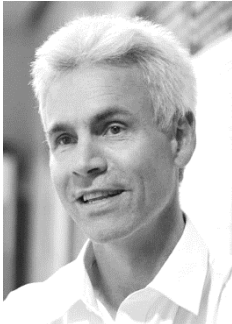
**ACCU-CHEK®**

---

## INVITED SPEAKERS

---

### International Speakers

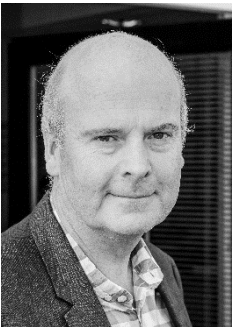


**Dr Robert Lindsay**

*University of Glasgow, UK*

Robert Lindsay graduated in Medicine at the University of Edinburgh in 1988 and is Reader in Diabetes & Endocrinology the Institute of Cardiovascular and Medical Sciences, University of Glasgow. He completed his PhD in fetal programming in Edinburgh in 1997 and postdoctoral work with the diabetes epidemiology group of the National Institutes of Health in Phoenix, Arizona. His principal research interests are early life determinants of diabetes with particular interest in diabetes and pregnancy. Dr Lindsay is the diabetes and endocrine lead for the combined endocrine/ obstetric antenatal clinic at Princess Royal Maternity Unit/ Glasgow Royal Infirmary. He was the chair of the subgroup on diabetes and pregnancy for the selective update of the Scottish Intercollegiate Guidelines on Diabetes (2010), is a member of the steering group of the Scottish Diabetes Research Network (SDRN) and chairs the SDRN epidemiology group. He is a member of the Diabetes and Pregnancy Study Group of the European Association of Diabetes and of the Diabetes

and Pregnancy writing group of the UK Diabetes Research Network. He was associate editor of *Diabetologia* 2014-17 and recently became secretary of the IADPSG.



**Prof Andrew Shennan**

*Kings College London, UK*

Andrew Shennan is Professor of Obstetrics at King's College London, based at St. Thomas' Hospital. He leads clinical research at the Women's Health Academic Centre, and is Clinical Director South London Clinical Research Network. He specialises in clinical trials in antenatal and intrapartum care. His research interests include interventions to predict and prevent preterm birth, pre-eclampsia, obstetric anaesthesia, global health and the use of blood pressure monitoring. His current research funding as applicant/co applicant is >£25m, in 19 grants. He has published over 300 peer reviewed research reports. He has an active clinical role in managing high risk obstetric patients, including a regular hands-on labour ward commitment, and a specialist preterm birth surveillance clinic (award winning 2013/2015/2016 innovations prize) that accepts national and international referrals. Background information: He was made an honorary member of the Obstetric Anaesthetic Association (OAA) in 2010. He chaired the Department of Health Committee on Blood

Pressure Monitoring in clinical practice, and has sat on the relevant committees for the International Standardization Organization (ISO), British Standards Institute (BSI) and the British Hypertension Society (BHS). He also advises the World Health Organisation (WHO) on perinatal research, and was a member of the Low Resource Use Blood Pressure device committee for the WHO. He is an expert advisor to the National Institute of Clinical Excellence (NICE) Hypertension in Pregnancy CDG, the Confidential Enquiry into Maternal and Child Health (CEMACH), Medicines and Health Products Regulatory Agency (MHRA) and advises the EU Commission. He was clinical director of the Maternity Workstream for NHS London 2008-2010, establishing a number of committees to determine long term strategy for Healthcare for London. He was the National chair of the reproductive health and childbirth specialty group 2010 to 2015, when it became the leading specialty in recruitment numbers nationally. His charity work also includes being chair of Action on pre-eclampsia (APEC), and advises Tommys the Baby Charity and Action Medical Research. He is a director of the International charity, Maternity Worldwide.

### National Speakers



**Robyn Barnes**

*Bankstown-Lidcombe Hospital*

I have worked as a dietitian for the past 19 years, and have specialised in the field of diabetes for the past 14 years. I am a Senior Dietitian specialising in Diabetes at the Diabetes Centre at Bankstown-Lidcombe Hospital. I am a Credentialed Diabetes Educator as well as an Accredited Practising Dietitian. I am a PhD candidate at the University of Newcastle. My research involves exploring the impact of dietary interventions on the optimisation of glycaemic control and neonatal outcomes in Gestational Diabetes Mellitus. I am a lead or co-author of several publications on this topic. I am currently the NSW Convenor of the Dietitians Association of Australia Diabetes Special Interest Group.



**Dr Amanda Beech**

*The Royal Brisbane and Women's Hospital*

Dr Amanda Beech graduated with Honours from the University of Sydney in 2010 and completed her basic physician training at The Royal Prince Alfred Hospital before commencing Advanced Training at The Royal Hospital for Women and Prince of Wales Hospitals. Amanda is undertaking dual training in Endocrinology and General Medicine, with a focus on Obstetric Medicine, and was awarded her Obstetric Medicine Certificate in 2016. She is currently completing her training at The Royal Brisbane and Women's Hospital. Prior to pursuing a career in medicine, Amanda spent 10 years teaching science, and this experience continues to direct her passion for ongoing medical education. She is on the Executive Council for SOMANZ, as the trainee representative, and is involved in developing SOMANZ guidelines for Hyperemesis, and Investigation of Pulmonary Embolus. Her research interests include hypertension in pregnancy, cardiovascular and haematological disorders in pregnancy.



**Lynelle Boisseau**

*Women's, Youth & Children Centenary Hospital Canberra*

Lynelle has been a Registered Nurse for 40 years, working within Australia, the United Kingdom and Canada. With over 26 years' experience within the ACT Health Diabetes Service, Lynelle is a very experienced and senior Diabetes Educator. Lynelle completed her Graduate Certificate in Diabetes Education at Deakin University, Victoria in 1996. Lynelle's comprehensive knowledge and substantial experience extends across the diabetes disease continuum and includes not only patient education and management, but teaching, training and mentorship of health professionals from junior nurses and educators to midwives and medical officers. Lynelle has participated in various research projects and has presented at local and national conferences and symposiums. Lynelle has shown strong leadership skills in the establishment of the diabetes in pregnancy service based at the Centenary Hospital for Women and Children incorporating Canberra and the South East Region of New South Wales. Lynelle is a member of

ADIPS, and has been an active member of the Australian Diabetes Educators Association for over 25 years.



**Prof Leonie Callaway**

*Royal Brisbane and Women's Hospital*

Professor Leonie Callaway works as an Obstetric Physician and Interim Director of Research in Women's and Newborn Services at the Royal Brisbane and Women's Hospital. She was Chief Investigator for the NHMRC funded SPRING study, examining the role probiotics might play in preventing gestational diabetes. She is profoundly grateful to work in a caring and compassionate team with Prof David McIntyre, Dr Marloes Dekker, Dr Helen Barrett, Ms Katie Foxcroft, A/Prof Victoria Eley, A/Prof Karin Lust, Dr Penny Wolski, Dr Ann-Maree Craven, Dr Fiona Britten, Dr Amanda Beech and many others. She is thrilled to report that in 2017, the Obstetric Medicine Research Team based at RBWH won a district wide "Research Excellence Award" for their contribution to complex health challenges. The odd glass of champagne may have been involved...



**A/Prof Jennifer Conn**

*The Royal Women's Hospital & The Royal Melbourne Hospital*

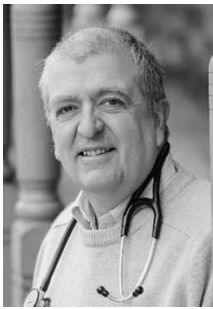
Clinical Associate Professor Jennifer Conn works as an endocrinologist at The Royal Women's and The Royal Melbourne Hospitals in Melbourne. Her major clinical focus is diabetes management in the clinic setting, especially in the areas of type 1 diabetes, diabetes in pregnancy and insulin pump therapy. A former secondary school teacher, Jennifer has a strong interest in medical education and is the Chair of the Health Professional Education Committee of the Australian Diabetes Society (ADS). She is also the Chair of the Executive Committee leading the insulin pump education project for ADS and the National Diabetes Services Scheme. She was a Council member of ADS for eight years until 2016.



**Prof Della Forster**

*La Trobe University / Royal Women's Hospital in Melbourne*

Della has a joint appointment as Professor of Midwifery and Maternity Services Research at Judith Lumley Centre, La Trobe University, and the Royal Women's Hospital in Melbourne. Her research focuses on three key areas - models of care, breastfeeding and perinatal mental health. She has conducted a number of large randomised controlled trials related to maternity care provision, and her main aim is to improve outcomes for mothers and babies.

**Prof Bill Hague**

*The University of Adelaide*

Made in China, produced in Hong Kong and brought up in England, Bill Hague trained in medicine at Cambridge and St Thomas' Hospital, London. He had an unorthodox career path, obtaining both MRCP and MRCOG. His mentors included Professor Michael de Swiet. He was the first in the UK to receive accreditation in Endocrinology and Obstetric Medicine. He came to Adelaide for two years in 1988 as a Consultant Research Fellow and Clinical Senior Lecturer in O&G, opening the first obstetric medicine clinic at The Queen Elizabeth Hospital alongside the late Brian Pridmore. He stayed in Adelaide with further posts at the Queen Victoria Hospital, and in 1995 at the new Women's and Children's Hospital, where he and Mark Morton took on the new Obstetric Physician posts together. In 1992, he initiated OMGA at Leonard's Mill, SA with Michael de Swiet as the international speaker. Annual meetings followed on both sides of the Tasman. In 1997 he became President of ASSHP, and, together with Mark Brown, led the production of the Second Consensus Statement on The detection, investigation and management of hypertension in pregnancy. Together with Janet Rowan in Auckland, he initiated the Metformin in Gestational diabetes (MiG) trial, and its subsequent follow-up studies after publication of the trial in the NEJM (2008). In 2005, he was made the first Honorary Member of SOMANZ. In 2011, he was promoted to full Professor in Obstetric Medicine. Despite slowing down, he maintains an active clinical and research role, as well as teaching overseas.

**A/Prof Boon Lim**

*Centenary Hospital for Women and Children Canberra Hospital and Health Services*

Boon joined the Centenary Hospital for Women and Children, Canberra in April 2015. Prior to this, he was Director of O&G at Royal Hobart Hospital, Tasmania. A graduate of the University of Malaya, Boon did his O&G training in Aberdeen, Scotland. After his senior registrar training, he was appointed to his first consultant position in Auckland, New Zealand in 1990. He moved back to the UK in 1994 where he was a consultant in Scotland and then in Cambridgeshire until his move to Australia in 2011. He has held many leadership and academic positions including being Chair of the Maternity and Newborn Clinical Programme Board for NHS East of England and Chair of the Pandemic Influenza Working Group of the RCOG. He has held honorary academic positions with the Universities of Auckland, Aberdeen, Cambridge and Tasmania, and is presently Clinical Associate Professor in O&G for the Australian National University. He has written several book chapters, papers in peer reviewed journals and co-authored an undergraduate textbook. He is reviewer for several journals and is an editor for the British Journal of Obstetrics and Gynaecology. He is also actively involved in RANZCOG including being on Council, Co-ordinator for the Short Answer Questions for the FRANZCOG examination and Deputy Chair of the Subspecialties Committee. His special interest is in the area of high risk obstetrics, especially in the area of abnormal placental implantation.

**Dr Vanessa Murphy**

*The University of Newcastle*

Dr Vanessa Murphy is a research scientist investigating the characteristics, mechanisms and consequences of asthma exacerbations during pregnancy and their health impact on both the mother and baby. She is chief investigator of the Breathing for Life Trial, a multi-centre RCT of inflammation-based management of asthma during pregnancy, with a focus on perinatal outcomes. She holds a Career Development Fellowship from the National Health and Medical Research Council, and works at the University of Newcastle and Hunter Medical Research Institute.

**Dr Marloes Nitert Dekker**

*The University of Queensland*

Dr Marloes Dekker Nitert is a Senior Lecturer in metabolism at The University of Queensland. Marloes is a biomedical researcher with a PhD from Lund University in Sweden. Her research focuses on the role of metabolism in complications of pregnancy. She currently heads a laboratory research group at UQ studying the role of the gut, oral and placental microbiotas in pregnancy, placental gene expression and epigenetic markers in pregnancy complications. Marloes works closely together with clinician-scientists and clinicians at the Royal Brisbane and Women's Hospital. She is part of the SPRING RCT team, which assesses if probiotics can prevent gestational diabetes mellitus in overweight and obese women.

**Dr Helen Robinson**

*Ipswich Hospital in Queensland*

Helen Robinson is a general and obstetric physician at Ipswich Hospital in Queensland. Helen completed her undergraduate medical degree at the university of Otago in Dunedin before moving to Australia to complete her physician-training. She is currently undertaking a PhD on the role of ketones in pregnancy. Helen is particularly interested in gestational diabetes and whether or not it is safe for women with GDM to restrict their carbohydrate intake.



**Dr Farah Sethna**

*Centenary Hospital for Women and Children*

Dr Farah Sethna is a Specialist Obstetrician and Gynaecologist at the Centenary Hospital for Women and Children in Canberra. She completed subspecialist training in Maternal Fetal Medicine at the Royal Victoria Infirmary in Newcastle and worked as a Consultant in London, before moving to Australia. She specialises in the care of women with medical and fetal problems in pregnancy and offers pre-pregnancy counselling for women with pre-existing medical problems and those with problems in previous pregnancies. Her other clinical interests include preterm delivery, high risk intrapartum care and pregnancy loss counselling.



**Prof David Simmons**

*Western Sydney University*

David is the Professor of Medicine at Western Sydney University, Head of the Campbelltown Hospital Endocrinology Department and Director of the Diabetes, Obesity, Metabolism Translational Research Unit. Between 2007-2014, he was the lead diabetes consultant at Cambridge University Hospitals NHS Foundation Trust, UK, before this Professor of Medicine at the University of Auckland and 1998-2002 was the Foundation Chair in Rural Health at the University of Melbourne. He is a past president of the Australasian Diabetes in Pregnancy Society (ADIPS) and was a member of the World Health Organisation technical working group on the criteria for hyperglycaemia in pregnancy. He was previously the chair of the Diabetes UK Health Professional Education Steering Group. He has led and been involved in several studies relating to diabetes in pregnancy and is currently Chief Investigator for the NHMRC funded ToBOGM study, the randomised controlled trial of treating GDM at booking. He has over 270 publications and has

won several national and international awards for his work in diabetes epidemiology, diabetes in pregnancy and diabetes service development.



**Prof Elizabeth Sullivan**

*University Technology Sydney*

Elizabeth Sullivan is a Distinguished Professor, Public Health and perinatal epidemiologist. She is currently, Assistant Deputy Vice Chancellor Research University Technology Sydney (UTS) and Head of the Discipline of Public Health. She established and is chief investigator of AMOSS, a national surveillance and research system of severe maternal morbidity and mortality. Professor Sullivan has a nationally successful track record of research development and management, with more than \$20 million in research funding as a chief investigator, longstanding national and international collaborations, and over 180 peer review publications and AIHW and WHO reports. She is a member of the NHMRC for the triennium 2015-2018 and was a member of both the Obstetrics and Gynaecology Clinical Committees of the Medicare Benefits Schedule Review Taskforce. Professor Sullivan is Chair of the inaugural UTS SAT for the Science in Australia

Gender Equity (SAGE) National Pilot of Athena SWAN and is committed to the advancement of gender equity in academia.



**Prof William Tarnow-Mordi**

*Sydney Medical School*

William Tarnow-Mordi, professor of neonatal medicine at the NHMRC Clinical Trials Centre, Sydney, is on the IMPACT Scientific Committee and advocates close partnership with parents, having published 8 papers with Melinda Cruz, co-founder of Miracle Babies Foundation. His goal is to see clinical trials integrated into routine care - locally via IMPACT and globally via the ALPHA Collaboration - so that "trials to improve healthy survival can enrol thousands of women and babies in one or two years instead of ten." He coordinated the International Neonatal Network, which originated the CRIB Score and has a longstanding clinical epidemiological interest in outcome prediction and comparison of quality of care in premature infants. He is a consistently strong advocate of large multicentre studies, which answer questions of fundamental importance in neonatal medicine. He led the BOOST II (2nd Benefits Of Oxygen Saturation Targeting Study) – which received a major award from the Federal Minister of Health at the Australian Clinical Trials Alliance

in 2017. BOOST II is part of the NeoPrOM trials Collaboration in nearly 5,000 very preterm babies, which has produced evidence that is likely to save millions of lives in coming decades. He has over 150 publications in peer reviewed journals and has been awarded over \$20 million in grants from NHMRC and has been CIA on the INIS, BOOST II, APTS LIFT and LEAP1 trials, and a CI on the NHMRC WOMBAT Collaboration Enabling Grant.



**Rosemary Young**

*ACT Health Diabetes Service*

Rosemary works in a team of Diabetes Dietitians with the ACT Health Diabetes Service and has done so since 2008. She graduated from the University of Wollongong in 1995 with a Master of Science in Nutrition and Dietetics and before moving to Canberra in 2006 worked in various dietitian and project officer roles in NSW and Queensland. In 2005 Rosemary was conferred a Graduate Certificate in Diabetes Education from UTS. She is an Accredited Practising Dietitian and a Credentialed Diabetes Educator. She has a special interest in diabetes in pregnancy but works with adult patients with all types of diabetes. She is currently studying a Graduate Certificate in Health Research through the University of Canberra with the hope of refreshing and developing her research skills.



**Julia Zinga**

*Royal Women's Hospital*

Julia Zinga is a Dietitian of 16 years experience, and holds a Bachelor of Health Science (Nutrition & Dietetics) from The University of Newcastle. The majority of Julia's dietetic career has been in the field of diabetes, providing dietary counselling to people of all ages with diabetes. Since 2014, Julia has worked as Diabetes Dietitian at Royal Women's Hospital, Melbourne, working in the multidisciplinary diabetes unit to support women with Type 1 or Type 2 diabetes who are pregnant or planning pregnancy, and women with gestational diabetes. Julia is also the producer of a pictorial resource for carbohydrate estimation, called 'How much Carb in that?'.

## MFM Colloquium Speakers



**Prof Jane Dahlstrom**

*Canberra Hospital*

Jane is Sub Dean of Canberra Hospital Campus at the Australian National University Medical School and also Professor of Anatomical Pathology. She is a Senior Staff Specialist at ACT Pathology, The Canberra Hospital where she is responsible for the perinatal service. She is current president of the International Pediatric Pathology Association (IPPA) and chair of the education committee for the International Academy of Pathology (IAP). Jane is a member of the International Stillbirth Alliance Scientific Committee. She enjoys teaching and is an active researcher with particular interests in perinatal and placental pathology.



**Dr Mitali Fadia**

*ACT Pathology, The Canberra Hospital*

Mitali is a Staff Specialist at ACT Pathology, The Canberra Hospital where she is responsible for the perinatal service. She enjoys teaching and has a special interest in perinatal and placental pathology.

---

## PROGRAM

---

**Thursday 19th October 2017**

### **Registration Open**

09:00AM - 4:00PM

Gallery/Atrium

### **Welcome and MFM Training Update**

10:00AM - 11:00AM

Chair: Michael Peek

Canberra Room

**Greg Duncombe**  
**Chris Wilkinson**

### **Advances in managing preterm birth**

11:00AM - 12:00PM

Chair: Michael Peek

Canberra Room

**Andrew Shennan**

### **Respiratory diseases in pregnancy**

12:00PM - 12:30PM

Chair: Michael Peek

Canberra Room

**Vanessa Murphy**

### **Lunch and Fellows Meeting**

12:30PM - 1:30PM

Canberra Room

### **WHA MFM interest group update**

1:30PM - 2:00PM

Chair: Maylene Pineda

Canberra Room

**Danny Challis**

### **Carrier Screening and PGD - an update for MFMs**

2:00PM - 2:30PM

Chair: Maylene Pineda

Canberra Room

**Debra Kennedy**

### **MFM Training in UK: opportunities for ANZ fellows**

2:30PM - 3:00PM

Chair: Maylene Pineda

Canberra Room

**Andrew Shennan**

### **Placenta mysteries unravelled**

3:00PM - 4:00PM

Canberra Room

Chair: Maylene Pineda

This hands-on session with fixed placentas aims to demonstrate common or important pathologies that occur in the placenta that may have implications for the mother or baby.

3:00 PM

**Jane Dahlstrom & Mitali Fadia**

Placenta mysteries unraveled *abs# 1*

### **Truffle Farm Tour**

4:00PM - 5:45PM

### **Monster Kitchen and Bar Dinner**

6:00PM - 9:00PM



**Registration Open**

09:00AM - 5:30PM

Gallery/Atrium

**Official Welcome to Country & Opening**

10:30AM - 10:40AM

Federation Ballroom

Chair: Michael Peek & Christopher Nolan

**Paul House (Welcome to Country)**

**Leonie Callaway (ADIPS)**

**Mark Morton (SOMANZ)**

**ADIPS Novo Nordisk Skip Martin Lecture**

10:40AM - 11:35AM

Federation Ballroom

Chair: Christopher Nolan

10:40 AM

**Robert Lindsay**

Type1 and type2 diabetes in pregnancy – what can we learn from international comparisons? *abs# 3*

*The conference acknowledges the support of*



**New strategies in managing hypertensive pregnancy**

11:35AM - 12:30PM

Federation Ballroom

Chair: Michael Peek

11:35 AM

**Andrew Shennan**

New strategies in managing hypertensive pregnancy *abs# 4*

**ADIPS Annual General Meeting**

12:30PM - 12:45PM

Federation Ballroom

**LEAP1 study**

12:30PM - 12:45PM

12:30 PM

**William Tarnow-Mordi**

Introduction to the NHMRC Lactoferrin Evaluation in Anaemia of Pregnancy (LEAP1) Trial  
*abs# 68*

**Poster Viewing and Lunch**

12:45PM - 1:45PM

Gallery/Atrium

## GDM Clinical Trials

1:45PM - 2:55PM

Chair: David McIntyre

Federation Ballroom

- 1:45 PM **Leonie Callaway**  
SPRING study *abs# 5*
- 2:00 PM **Marloes Dekker Nitert**  
Metabolic regulation of maternal metabolism by gut bacteria: hypotheses, evidence and speculation *abs# 6*
- 2:15 PM **Della Forster**  
Diabetes and antenatal milk expressing (DAME): a multicentre randomised controlled trial *abs# 7*
- 2:35 PM **David Simmons**  
The Treatment of Booking Gestational diabetes Mellitus (ToBOGM) Randomised Controlled Trial *abs# 8*

## ADIPS Free Communication 1

2:55PM - 3:45PM

Chair: Helen Barrett

Federation Ballroom

- 2:55 PM **Marloes Dekker Nitert**  
A low-fibre diet influences *Collinsella* abundance in the gut microbiome and alters maternal metabolism at 16 weeks gestation *abs# 9*
- 3:05 PM **David Simmons**  
Association between Gestational Weight Gain and Gestational Diabetes Risk in DALI: Vitamin D and Lifestyle Intervention for the prevention of gestational diabetes *abs# 10*
- 3:15 PM **Sandra L Neoh**  
Continuous Glucose Monitoring in Pregnant Women with Type 1 Diabetes (CONCEPTt): a multicentre international randomised controlled trial *abs# 11*
- 3:25 PM **Alex Chung**  
Pregnancy Outcomes in Recurrent Gestational Diabetes: a Study of Consecutive Gestational Diabetes Pregnancy Pairs *abs# 12*
- 3:30 PM **Rachel T McGrath**  
Excess Foetal Growth and Glycaemic Control in Type 1 Diabetes and Pregnancy *abs# 13*
- 3:35 PM **Jincy Immanuel**  
Technical accuracy of blood glucose meters in pregnancy: a systematic review *abs# 14*
- 3:40 PM **Sheila J Cook**  
Pregnancy outcomes for rural women with gestational diabetes: A retrospective audit *abs# 15*

## Afternoon Tea

3:45PM - 4:15PM

Gallery/Atrium

**Novel strategies for optimal asthma management during pregnancy**

4:15PM - 4:45PM

Chair: Lucy Bowyer

Federation Ballroom

4:15 PM

**Vanessa Murphy**

Novel strategies for optimal asthma management during pregnancy *abs# 16*

**25th Anniversary of OMGA and Presentations of Obstetric Medicine Certificates and Awards**

4:45PM - 5:45PM

Federation Ballroom

25th Anniversary of OMGA

**Bill Hague**

Presentations of Obstetric Medicine Certificates and Awards

**Catherine Marnoch and Mark Morton**

**Welcome Reception**

5:45PM - 7:30PM

Gallery/Atrium

**Registration Open**

07:00AM - 5:30PM

Gallery/Atrium

**Roche Breakfast Session - Lightening the Load - Managing the expanding GDM population**

7:30AM - 8:30AM

Canberra Room

*The conference acknowledges the support of*



**Plenary Session 1**

8:30AM - 9:45AM

Chair: Joanne Said

Federation Ballroom

8:30 AM

**Boon Lim**

Time to be delivered – is induction of labour a risky business? *abs# 17*

8:55 AM

**Farah Sethna**

Optimising fetal outcomes in women with medical disorders in pregnancy *abs# 18*

9:20 AM

**William Tarnow-Mordi**

Delivering late preterm infants: when does it pay to wait? *abs# 19*

**SOMANZ Free Communication 1**

9:45AM - 10:30AM

Chair: Joanne Said

Federation Ballroom

9:45 AM

**Georgia Ross**

Predictive markers for preterm birth in high-risk women with prophylactic intervention: a large prospective series *abs# 20*

9:50 AM

**Narelle Kennedy**

Changes in maternal abdominal subcutaneous fat layers using ultrasound: a longitudinal study *abs# 21*

9:55 AM

**Marloes Dekker Nitert**

Women who develop hypertensive disorders of pregnancy have altered composition of the gut microbiota at 16 weeks gestation *abs# 22*

10:00 AM

**Elle Knights**

Anaemia Clinical Practice Improvement, The Women's and Children's Hospital experience *abs# 23*

10:05 AM

**Victoria A Eley**

Increased abdominal subcutaneous fat thickness measured by ultrasound at 18-22 weeks gestation is associated with adverse maternal pregnancy outcomes. *abs# 24*

10:10 AM

**Jack G Mangos**

Repeatability of USCOM®-measured cardiac output and systemic vascular resistance in normotensive non-pregnant and pregnant women *abs# 25*

10:15 AM	<b>Georgia Ross</b> A comparison of fetal fibronectin and cervical length in predicting outcome in women with congenital uterine anomalies <i>abs# 26</i>
10:20 AM	<b>Meg Henze</b> Severe hypertriglyceridaemia in pregnancy <i>abs# 27</i>
10:25 AM	<b>Helen L Barrett</b> Faecal microbiome in women in early pregnancy is altered in the setting of asthma. <i>abs# 28</i>

## SOMANZ Free Communication 2

9:45AM - 10:30AM

Canberra Room

Chair: Lucy Bowyer

9:45 AM	<b>Renee Eslick</b> Thrombocytopenia in Pregnancy: an overview of current Australian practice <i>abs# 29</i>
9:50 AM	<b>Jessica EK Gehlert</b> Something old, something new... mineralocorticoid receptor antagonists in pregnancy <i>abs# 30</i>
9:55 AM	<b>Natassia Rodrigo</b> Hypercalcaemia in Pregnancy: Describing Three Distinct Case Presentations, Aetiologies and Acute Management Strategies for this Rare Condition <i>abs# 31</i>
10:00 AM	<b>Sai Sankare Siritharan</b> Maternal body composition, energy homeostasis and micronutrient intake 6 months after hypertensive compared to normotensive pregnancy <i>abs# 32</i>
10:05 AM	<b>Amanda Beech</b> The utility of Albumin infusion in a pregnancy complicated by Familial Podocytopathy and sub-nephrotic range proteinuria. <i>abs# 33</i>
10:10 AM	<b>Lucy McBride</b> Evaluation of suspected pulmonary embolism in pregnancy and the puerperium <i>abs# 34</i>
10:15 AM	<b>Jade Martyn</b> Non-invasive study of haemodynamic parameters in normotensive versus hypertensive pregnancies <i>abs# 35</i>
10:20 AM	<b>Gemma Bylos</b> Cardiac Structure and Function 6 months after Normal or Hypertensive Pregnancy: The P4 Study <i>abs# 36</i>
10:25 AM	<b>Fergus Gardiner</b> The prevalence and pregnancy outcomes of Obstetric Cholestasis <i>abs# 37</i>

## Morning Tea

10:30AM - 11:00AM

Gallery/Atrium

## **ADIPS Jeremy Oats Lecture: 'Lessons from the past: Do they show the way forward?'**

11:00AM - 11:45AM

Federation Ballroom

Chair: Leonie Callaway

11:00 AM

**Aidan McElduff**

Jeremy Oats Oration *abs# 38*

## **ADIPS Free Communication 2**

11:45AM - 1:00PM

Federation Ballroom

Chair: Sarah Price

11:45 AM

**Robyn Barnes**

Excessive weight gain before and during GDM treatment – what is the impact? *abs# 39*

11:55 AM

**David McIntyre**

Could we obtain better “value” from the pregnancy oral glucose tolerance test (OGTT) in diagnosis of gestational diabetes mellitus (GDM)? A secondary analysis using the Australian HAPO data. *abs# 40*

12:05 PM

**Tang Wong**

A novel calculator to determine the risk of insulin therapy in women with GDM *abs# 41*

12:15 PM

**Jeff R Flack**

Have the new ADIPS GDM criteria resulted in a change in the clinic population and/or maternal and neonatal outcomes? *abs# 42*

12:20 PM

**David M.T. Ehmman**

Are the changes in diagnostic criteria for Gestational Diabetes Mellitus reflected in pregnancy outcomes: a retrospective assessment? *abs# 43*

12:25 PM

**Robyn Barnes**

What is the relationship between pre-pregnancy BMI and fasting and post load OGTT values in Pregnancy? *abs# 44*

12:30 PM

**Vidura Perera**

Biomarkers and GDM risk prediction *abs# 45*

12:35 PM

**Eddie X Shen**

Seasonality, temperature and pregnancy oral glucose tolerance test results in Australia *abs# 46*

12:40 PM

**Amanda Beech**

A Case of Lactation Ketoacidosis following a Low Carbohydrate (Ketogenic) diet *abs# 47*

12:45 PM

**Anoji AT Thevarajah**

Factors associated with neonatal Hyperbilirubinaemia in Gestational Diabetes Mellitus *abs# 48*

12:50 PM

**Sofia Nahavandi**

Maternal glycaemic biomarkers associated with birthweight and ‘large-for-gestational-age’ infants in pregnancies affected by diabetes *abs# 49*

12:55 PM

**Amy L Harding**

Hyperglycaemia associated with antenatal corticosteroid use *abs# 50*

## **SOMANZ Annual General Meeting**

1:00PM - 1:15PM

Federation Ballroom

## **Poster Viewing and Lunch**

1:15PM - 2:15PM

Gallery/Atrium

## **Using insulin pumps in pregnancy**

2:15PM - 2:55PM

Federation Ballroom

Chair: Chris Nolan

2:15 PM

**Lynelle Boisseau**

Using insulin pumps in pregnancy: understanding insulin pumps *abs# 51*

2:30 PM

**Jennifer Conn**

Insulin pump therapy in pregnancy *abs# 52*

## **The great carbohydrate debate: a lower carbohydrate diet (<45%) is best**

2:55PM - 3:45PM

Federation Ballroom

- Julia Zinga
- Helen Robinson
- Robyn Barnes
- Rosemary Young

## **Afternoon Tea**

3:45PM - 4:15PM

Gallery/Atrium

## **AMOSS Session - Heart Disease in Pregnancy: Diagnosis and Management of heart disease in pregnancy**

4:15PM - 5:30PM

Federation Ballroom

Chair: Elizabeth Sullivan

- Australian context and what women say?
- Diagnosis and management of heart disease in pregnancy - the medical and obstetric sides: Interactive Q&A **William Parsonage** and **Michael Peek**
- Multidisciplinary Panel Discussion: Priorities to improve care of heart disease in pregnancy: **Elizabeth Sullivan, Kirsty Douglas, David Watson, William Parsonage, Angela Hehir**

## **ADIPS Diabetes in Pregnancy Clinical Audit Discussion**

5:30PM - 6:00PM

Canberra Room

Chair: David Simmons

Discussion on the establishment of an ADIPS Diabetes in Pregnancy Audit Program  
**David Simmons**  
Establishing the ADIPS Diabetes in Pregnancy Clinical Audit Programme *abs# 69*

## **Conference Dinner – GREAT GATSBY THEME**

7:00PM - 11:00PM

Old Parliament House

**Registration Open**

07:00AM - 1:30PM

Gallery/Atrium

**Medtronic Breakfast Session - Dealing with maternal glycaemia now, for the future**

7:30AM - 8:30AM

Canberra Room

**Ohad Cohen**

*The conference acknowledges the support of*

**Medtronic**  
Further, Together

**SOMANZ Priscilla Kincaid-Smith Lecture - 'Pre-eclampsia: are there simple solutions for this global problem?'**

9:00AM - 11:00AM

Federation Ballroom

Chair: Annemarie Hennessy

9:00 AM

**Andrew Shennan**

SOMANZ Priscilla Kincaid-Smith Lecture *abs# 54*

**SOMANZ Free Communication 3**

10:05AM - 11:00AM

Federation Ballroom

Chair: Annemarie Hennessy

10:05 AM

**Erin Clark**

An alternative to maternal intramuscular steroid injections for fetal lung maturation in women with Type 1 diabetes. *abs# 55*

10:15 AM

**Stephanie C Cox**

Effectiveness of enoxaparin for prevention of Venous Thromboembolism during pregnancy and post-partum *abs# 56*

10:25 AM

**Shaun Brennecke**

Introduction of the sFlt-1/PlGF Ratio Test for the Prediction of Preeclampsia in a Pregnancy Day Care Setting in an Australian Tertiary Perinatal Centre: A Budget Impact Assessment *abs# 57*

10:35 AM

**Katie L Powell**

Assessment of novel predictive biomarkers for pregnancy complications *abs# 58*

10:45 AM

**Patrick G Lan**

Utility of Pulse-Wave Analysis in First-trimester Prediction of Pre-eclampsia *abs# 59*



## SOMANZ Free Communication 4

10:05AM - 11:00AM

Chair: Farah Sethna

Canberra Room

10:05 AM

**Catherine Brumby**

Acute Kidney Injury in Pregnancy and the Puerperium *abs# 60*

10:15 AM

**Megan E Jensen**

Predictors of lower vitamin D status in pregnant women with asthma and its association with preeclampsia *abs# 61*

10:25 AM

**Katrina Chau**

Effect of placental growth factor on trophoblast integration into endothelial cell networks in the presence of inflammation *abs# 62*

10:35 AM

**Jane Rigg**

Primary hyperparathyroidism in pregnancy: a retrospective review of management and maternofetal outcomes at the Royal Brisbane and Women's Hospital 2000 to 2015. *abs# 63*

10:45 AM

**Kathryn E Austin**

Pregnancy outcomes in women with a history of stroke *abs# 64*

## Morning Tea

11:00AM - 11:30AM

Gallery/Atrium

## ADIPS Plenary

11:30AM - 12:05PM

Chair: Leonie Callaway

Federation Ballroom

11:30 AM

**Robert Lindsay**

GDM implications for the offspring *abs# 65*

*The conference acknowledges the support of*



## Complex cases with multidisciplinary panel

12:05PM - 1:15PM

Chairs: David Simmons and Ian Fulcher

Federation Ballroom

12:05 PM

**Amanda Beech**

Managing a mix of complex medical problems during pregnancy *abs# 66*

12:40 PM

**Christopher Nolan**

A patient with type 1 diabetes and complications *abs# 67*

## Awards & Meeting close

1:15PM - 1:30PM



Empowering pregnant women with Type 1 Diabetes to achieve a **healthy glycaemic range** through predictive alerts<sup>1</sup>

## Guardian™ Connect

CONTINUOUS GLUCOSE MONITORING SYSTEM



Medtronic Australasia Pty Ltd  
5 Alma Road  
Macquarie Park, NSW 2113  
Australia  
Tel: +61 2 9857 9000  
Fax: +61 2 9889 5167  
Toll Free: 1800 668 670

E-Mail: [australia.diabetes@medtronic.com](mailto:australia.diabetes@medtronic.com)  
Facebook: [www.facebook.com/MedtronicDiabetesAUS](https://www.facebook.com/MedtronicDiabetesAUS)  
Twitter: @DiabetesANZ  
YouTube: Medtronic Diabetes ANZ

© Medtronic 2017 All Rights Reserved.  
Printed in Australia 08/2017

1. Feig DS et al. *Lancet* 2017; In press. Available at: [http://dx.doi.org/10.1016/S0140-6736\(17\)32400-5](http://dx.doi.org/10.1016/S0140-6736(17)32400-5).

[medtronic.com.au](http://medtronic.com.au)

**Medtronic**

## POSTER LISTING

**Anastasia Mikuscheva**

21-year-old pregnant woman with mature onset diabetes of the young-5 *abs# 100*

**Georgia Ross**

Predicting risk of spontaneous preterm birth in women with and without prophylactic intervention in situ: the QUIPP app is safe and generalisable *abs# 101*

**Georgia Ross**

The Neutrophil-to-Lymphocyte Ratio and its relationship to placental inflammation and infection in late miscarriage and preterm birth *abs# 102*

**Mawson Wang**

Review of Stillbirths from Diabetic and Gestational Diabetic Mothers at Westmead Hospital, Sydney *abs# 103*

**Siobhan Boyle**

Outcomes of Dilated Cardiomyopathy in Pregnant Women from an Australian Tertiary Centre for Maternal Medicine *abs# 104*

**Kewei Kw Zhang**

Urinary PLGF in preeclampsia and intrauterine fetal growth restriction - an alternative to circulating biomarkers *abs# 105*

**Christie J Bennett**

Interventions designed to reduce gestational weight gain can reduce the incidence of gestational diabetes: a systematic review and meta-analysis *abs# 106*

**Narelle Kennedy**

Elastography: a novel evaluation of abdominal subcutaneous fat in pregnancy *abs# 107*

**Suji Prabhakaran**

Tocolytic Induced Acute Pulmonary oedema - A case report *abs# 108*

**Tatsuya Fukami**

The validity of cutoff  $\geq 130$  mg/dl in 50g-Oral glucose challenge tolerance test for gestational diabetes mellitus screening *abs# 109*

**Mary Wicks**

Not so sweet - Diabetes in Pregnancy - The Central Australian Experience *abs# 110*

**Julie George**

Primary hyperaldosteronism presenting with Early Severe Preeclampsia: Case report *abs# 111*

**Karen Whitfield**

Therapeutic heparin during the peri partum period – challenges associated with safe use. *abs# 112*

**Monica Zen**

Microalbuminuria as an early predictor of preeclampsia in the pre-gestational diabetic population *abs# 113*

**Emanuelle Best**

Ethical Issues Surrounding Midtrimester Preterm Premature Rupture of the Membranes *abs# 114*

**Annabelle Lamprecht**

A Retrospective Audit of the Efficacy and Impact of New Glycaemic Targets in the Treatment of Gestational Diabetes Mellitus on the Sunshine Coast *abs# 115*

**Patrick G Lan**

Home Blood Pressure Measurement in Women with Pregnancy-related Hypertensive Disorders *abs# 116*

**Naomi Eastwood-Wilshire**

Neonatal body composition PEAPOD outcomes in young onset type 2 diabetes pregnancies: a comparison with type 1 diabetes *abs# 117*

**Ziad TA Al-Rubaie**

Validation of clinical practice guidelines for predicting pre-eclampsia and tailoring aspirin prophylaxis: individual participant data meta-analysis *abs# 118*

**Aspasia Pefanis**

De novo ANCA-Vasculitis in pregnancy *abs# 119*

**Marloes Dekker Nitert**

Visualising the placental microbiota: can we see the bacteria? *abs# 120*

**Emanuelle Best**

The Use of Blood Transfusion in Severe Antenatal Anaemia *abs# 121*

**Dorothy F Graham**

Recurrent fever in pregnancy *abs# 122*

**Sivanthi Senaratne**

Anorexia nervosa in pregnancy. A patient with assisted conception and a twin pregnancy managed at our hospital. *abs# 123*

**Susan G Gray**

The emerging role of metformin in Gestational Diabetes Mellitus:- Study of collaboration between prescribing practitioners and allied health professionals in the care of women with hyperglycaemia in pregnancy. *abs# 124*

**Carin Black**

Mid-pregnancy Prediction of Preeclampsia using Placental Biomarkers *abs# 125*

**Rachel T McGrath**

The Healthcare Experience for Women with Gestational Diabetes from Culturally and Linguistically Diverse Backgrounds *abs# 126*

**Wai (Geraldine) Woo**

Management of women with gestational diabetes by Obstetricians in "Home Teams" *abs# 127*

**Rosie J Viner**

The impact of the IADPSG guideline for Gestational Diabetes Mellitus on a Secondary Hospital population *abs# 128*

**Melinda Lam**

Dysregulation of circulating lipids in patients with gestational diabetes *abs# 129*

**Emily Gianatti**

Evaluation of an Obstetric Subcutaneous Insulin Order and Blood Glucose Chart in Women with Gestational Diabetes at Fiona Stanley Hospital *abs# 130*

**Emily Gianatti**

Gestational Diabetes at Fiona Stanley Hospital: An audit of our first year of service *abs# 131*

**Siew Pei Goh**

Gestational Diabetes Mellitus Investigations and Outcomes *abs# 132*

**Siew Pei Goh**

A Case of Splenic Vessel Torsion and Rupture in Pregnancy. *abs# 133*

**Sheila J Cook**

Non-fasting triglycerides correlate with birthweight in women with Gestational Diabetes *abs# 134*

**Benita Knox**

Accuracy of ultrasound estimation of birthweight in women with type 1 diabetes compared to type 2 diabetes *abs# 135*

**David Simmons**

Trends in pregnancy outcomes for women with gestational diabetes in Sweden 1998-2012: a nationwide cohort study *abs# 136*

**Lee Keng Tan**

Neonatal outcomes after Antenatal Corticosteroids in Women with Gestational Diabetes *abs# 137*

**David Simmons**

Birth trauma in babies born to women with and without type 1 diabetes in Sweden 1998-2012: relationship with maternal and baby weight *abs# 138*

**Amanda Beech**

A Case of Lactation Ketoacidosis following a Low Carbohydrate (Ketogenic) diet. *abs# 139*

**Amanda Beech**

Audit of the Urgent Management of Severe Hypertension over a 12-month period at the Royal Hospital for Women, Randwick *abs# 140*

**William Lhlau**

Vitamin B12 and Holotranscobalamin in Pregnancy *abs# 141*

**Maryam Sina**

Development of an integrated, district-wide approach to pre-pregnancy management for women with pre-existing diabetes in a multi-ethnic population *abs# 142*

**Annie G Cox**

Awareness and use of iodine supplementation amongst women attending a low risk pregnancy clinic. *abs# 143*

**Patrick G Lan**

Effect of early use of low-dose aspirin therapy on late-onset pre-eclampsia *abs# 144*

**Julia Zinga**

Gestational weight monitoring: pregnant women expect it and believe it to be beneficial *abs# 145*

**Amanthi Shamani Mendis**

The old and new diagnostic criteria for gestational diabetes: a comparison of the maternal clinical profiles and pregnancy outcomes *abs# 146*

**Michelle Yu**

Beware Catastrophic Antiphospholipid Syndrome (CAPS) about *abs# 147*

**Michelle Yu**

Pseudomonas Aeruginosa Sepsis secondary to Cervical Cerclage *abs# 148*

**Lucy C Risbey**

Pre-conception care in Type 1 diabetic women *abs# 149*

**Catherine A Marnoch**

Expectations verses reality - Clinical experiences during the Obstetric Medicine rotation at Auckland City Hospital: A comparison with the SOMANZ Obstetric Medicine Curriculum. *abs# 150*

**Annabelle Lamprecht**

Acute Fatty Liver of Pregnancy - a possible extra-intestinal manifestation of inflammatory bowel disease? *abs# 151*

**Nina Meloncelli**

A multidisciplinary team survey of current practices for managing Gestational Diabetes Mellitus in Australia *abs# 152*

**Darshika J Christie-David**

Women with Gestational Diabetes and neonatal outcomes in the Northern Beaches after three years *abs# 153*

**Emanuelle Best**

The Management of Severe Antenatal Constipation *abs# 154*

**Elle Knights**

Anaemia clinical practice improvement project, Telephone audit *abs# 155*

**Sornalatha Vasan**

Acute Ischemic stroke in Pregnancy with Gestational Diabetes *abs# 156*

**Joy Kingdom**

Diabetes in Pregnancy: A visual resource to support Aboriginal women and health providers *abs# 157*

**Laura C Kourloufas**

The impact of dietary education settings on gestational diabetes mellitus outcomes in women diagnosed according to the new Australasian diabetes in pregnancy criteria *abs# 158*

**Sornalatha Vasan**

MACROSOMIA- is it Diabetes or genes *abs# 159*

**Alison Barry on behalf of Ann Peacock**

An evaluation of an eLearning Series to improve clinician's knowledge of Gestational Diabetes Mellitus (GDM) *abs# 160*

**Trish Ryan**

Audit of Data Collected on GDM Population in the Australian Capital Territory *abs# 161*

**Elisa J Ford**

The effect of body mass index on diagnosis of gestational diabetes among Australian Aboriginal pregnant women *abs# 162*

**Elisabeth Ng**

The impact of adapting to the new diagnostic criteria for gestational diabetes *abs# 163*

**Shan Jiang**

Characteristics of women with small for gestational age infants diagnosed by IADPSG gestational diabetes criteria *abs# 165*

**Natasha Vasudeva**

The Case of a Spontaneous Uterine Rupture at Term *abs# 166*

**Natassia Rodrigo**

A Retrospective Audit of Gestational Diabetes Mellitus: A Preliminary Analysis of the Royal North Shore Experience *abs# 167*

**Catherine Brumby**

Acute Kidney Injury in pregnancy-related ICU admission: are we missing mild AKI? *abs# 169*

**Megan Gemmill**

Educating Midwives in the Management of Women with Diet treated Gestational Diabetes Mellitus *abs# 170*

**Robyn A Barnes**

Are there differing patterns of dysglycaemia in women diagnosed with GDM according to new versus old ADIPS criteria? *abs# 171*

**Julia Zinga**

Identifying women at risk of GDM: are lifestyle interventions occurring early enough? *abs# 172*

**Archee Singh**

Progressive deep vein thrombosis in pregnancy: does LGA with polyhydramnios play a role? *abs# 173*

**Elly Dr McNamara**

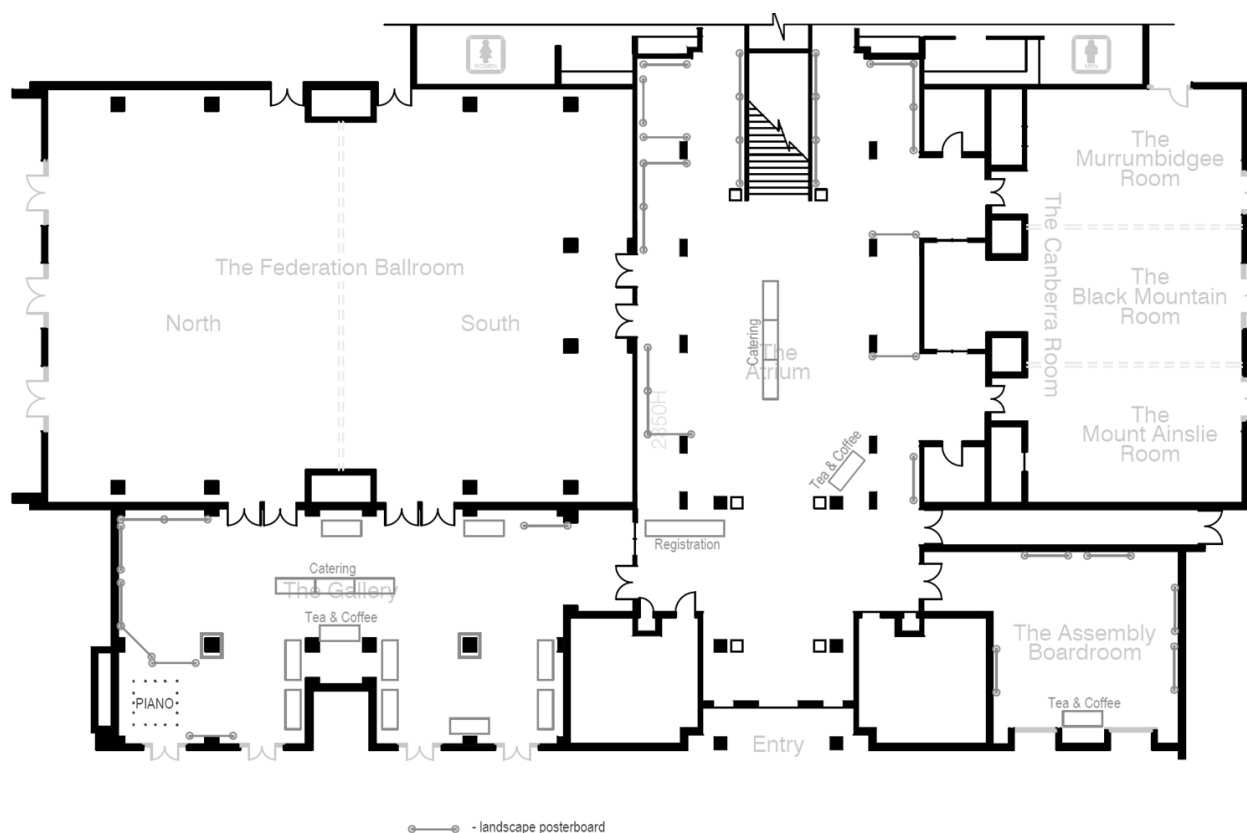
Impact of new diagnostic and treatment criteria for gestational diabetes: a cohort study *abs# 174*

**Jo Laurie**

Portal hypertension and pregnancy: concealed perils *abs# 175*

## EXHIBITION & FLOOR PLAN

### EXHIBITION FLOOR PLAN



### SPONSOR & EXHIBITOR LISTING

#### Alexion Pharmaceuticals

**Table 4**

Alexion is a global biopharmaceutical company focused on developing and delivering life-transforming therapies for patients with devastating and rare diseases. Our global headquarters and research operations are in New Haven, Conn. Alexion's approximately 3,000 employees around the world serve patients in 50 countries.

#### Diabetes Australia/NDSS

**Table 8**

The National Diabetes Services Scheme (NDSS) is an initiative of the Australian Government administered with the assistance of Diabetes Australia. The NDSS delivers diabetes-related products at subsidised prices and provides information and support services to people with diabetes. Registration is free and open to all Australians diagnosed with diabetes.

#### Eli Lilly

**Table 3**

Lilly is a global healthcare leader that unites caring with discovery to make life better for people around the world. We were founded more than a century ago by Colonel Eli Lilly, a man committed to creating high quality medicines that meet real needs and today, we remain true to that mission in all our work. Across the globe, Lilly employees work to discover and bring life-changing medicines to those who need them, improve the understanding and management of disease, and give back to communities through philanthropy and volunteering. At Lilly, we're inspired to make a difference in people's lives every day.

#### Ferring Pharmaceuticals

**Table 2**

Ferring Pharmaceuticals is a research-driven biopharmaceutical company devoted to identifying, developing and marketing innovative products in the fields of reproductive health, urology, gastroenterology, endocrinology and osteoarthritis. Ferring is committed to research in fertility, obstetrics and gynaecology in order to help couples conceive and complete a successful pregnancy. Through its offer of innovative products, Ferring's goal is to provide the best treatments to support every stage of the reproductive cycle, from conception...to birth.



**Hologic Australia****Table 9**

Hologic, Inc. is a leading developer, manufacturer and supplier of premium diagnostic products, medical imaging systems and surgical products. The Company's core business units focus on diagnostics, breast health, GYN surgical, and skeletal health. With a unified suite of technologies and a robust research and development program, Hologic is dedicated to The Science of Sure. For more information on Hologic, visit [www.hologic.com](http://www.hologic.com).

**Medtronic Australasia****Table 6**

As a global leader in medical technology, services and solutions, Medtronic improves the lives and health of millions of people each year. We use our deep clinical, therapeutic, and economic expertise to address the complex challenges faced by healthcare systems today. Let's take healthcare Further, Together. Learn more at [Medtronic-diabetes.com.au](http://Medtronic-diabetes.com.au).

**Novo Nordisk****Table 1**

Novo Nordisk is a focused health care company and a world leader in diabetes care. Founded in 1923, we have pioneered many therapeutic breakthroughs in diabetes care. Our strong commitment to changing diabetes is reflected in our focus on research and development, our partnerships with professional and consumer organisations and our commitment to communities in the developing world through the World Diabetes Foundation. Novo Nordisk is committed to fighting this growing epidemic and to drive change for people affected by diabetes with the ultimate aim of finding a cure.

**Roche Diabetes****Table 7**

Roche Diabetes Care is a pioneer in the development of blood glucose monitoring systems and a global leader for diabetes management systems and services. For over 40 years, the Accu-Chek brand has been dedicated to enable all people with diabetes to live life as normal and active as possible as well as to empower healthcare professionals manage their patients' condition in an optimal way. Today, the Accu-Chek portfolio offers people with diabetes and healthcare professionals innovative products and impactful solutions for convenient, efficient and effective diabetes management. It encompasses blood glucose meters, insulin delivery systems, lancing devices, data management systems and education programs – contributing to an improved medical outcome. For more information: [www.accu-chek.com.au](http://www.accu-chek.com.au)

**Royal Australasian College of Physicians****Table 5**

Evolve is an initiative being led by physicians and the Royal Australasian College of Physicians (RACP) to drive high quality care for patients in Australia and New Zealand. It is part of a global movement that curates the latest evidence to keep medical specialists up to date with contemporary clinical practice and deliver care that is right for each patient. That means identifying and working to reduce clinical practices, which in some clinical contexts are overused, provide little or no benefit, or may even cause unnecessary harm. Evolve recommendations for 18 specialties can be viewed and downloaded from the Evolve website - <https://evolve.edu.au/>. RACP connects, represents and trains over 16,500 Physicians and 8,000 trainees from 33 different specialties, across Australia and New Zealand.

---

## NOTES

---

---

## NOTES

---

---

## NOTES

---